



RISEONIC
NAMOH
BY THE AGP GROUP

2 & 3 BHK Resort like Living



An Edge of Excellence!

Riseonic Group believes your home should define the purpose of your being! Made with a soulful fervor, each project that comes under the group's vast umbrella differentiates itself with something unique that creates an impact on the resident's minds and gives them a satisfaction much beyond comprehension! Customized for Jains, Riseonic Namoh is a one of its kind scheme, keeping in mind intricate details, it soothes your soul and caters to all that your heart desires! Come, be a part of its alluring experience!



Get it more;
Get it grand!



A jazzy offering specially for Jains!
With 46+ amenities, enjoy resort like living!

2 & 3 BHK Resort like Living

Epitome of Joy; A Place called Home !

Located at the hotspot of Ahmedabad, the Sabarmati area, a residential scheme that fulfills your desires to the fullest. It's about dreams becoming real, and all that you ever wanted being facilitated at one place! Welcome to the world of Riseonic Namoh!


**RISEONIC
NAMOH**
ABODES OF LUXURY!



Uninterrupted Nature View

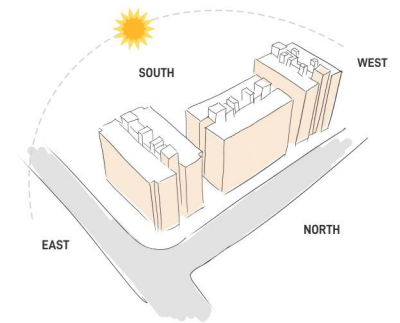
A quick glimpse of an aerial view of the scheme is clearly suggestive of its green surroundings, good connectivity of roads at all sides and the marvelous building itself stands as proof of premium living!





Intelligent Design

The brilliantly designed project merges residences & commercial spaces and open green landscape beautifully. There is enough space between towers and the direction is as per vaastu.





**All that you find in a resort
is now found where you stay!**


**RISEONIC
NAMOH**
ABODES OF LUXURY!

46+
Amenities



DECORATIVE
ENTRANCE GATE



SECURITY CABIN



ENTRANCE PLAZA



FAMILY
DROP ZONE



SCHOOL BUS
PICK POINT



NO VEHICLE ZONE
@ GROUND FLOOR



INNOVATIVE
ENTRANCE FOYER



SPACIOUS
SOCIETY OFFICE



INDOOR GAMES



TODDLER ROOM



GYMNASIUM



MULTI-PURPOSE
HALL



COMMUNITY KITCHEN
WITH WASH YARD



MUSIC ROOM



TV ROOM



CO-WORKING SPACE



MIND GAMES
& CARD ROOM



SENIOR CITIZEN
ROOM



PATHSHALA



LIBRARY



UPASHRAY



JAIN DERASAR



CHILDREN
PLAY AREA



SANDPIT AREA



KIDS EXERCISE
AREA



GAZEBO



YOGA &
MEDITATION DESK



OPEN AIR
THEATER



PARTY LAWN



SITTING
AMIDST NATURE



LANDSCAPED
COMMON PLOT



JOGGING TRACK



BASKET BALL



SKATING TRACK



BADMINTON COURT



TENNIS COURT



CRICKET PITCH



POWER BACKUP
FOR COMMON AREA



ALLOCATED
PARKING



TERRACE
GAZEBO



TERRACE
COFFEE POINT



TERRACE
PANTRY



SOLAR POWERED
COMMON AREA



CCTV SURVEILLANCE



24 HR.
WATER SUPPLY




ELECTRICAL VEHICLE
CHARGING POINT

Pristine Feel, Perfect for you!

The blissful fervor of the greens adjoining the temple space; to add to it the throbbing basketball court! All in one scene! Well, this is not all! There's much more to this magnificent residential dwelling tailor-made for your comfort!




Welcome
**Divinity
into Life**

The exemplary thought and implementation of a beautiful spiritual space within the dwelling abodes gives a soothing touch to your senses. It's all that you need to connect to the Almighty and feel blissful!



UPASHRAY & JAIN DERASAR IN CAMPUS

GYMNASIUM

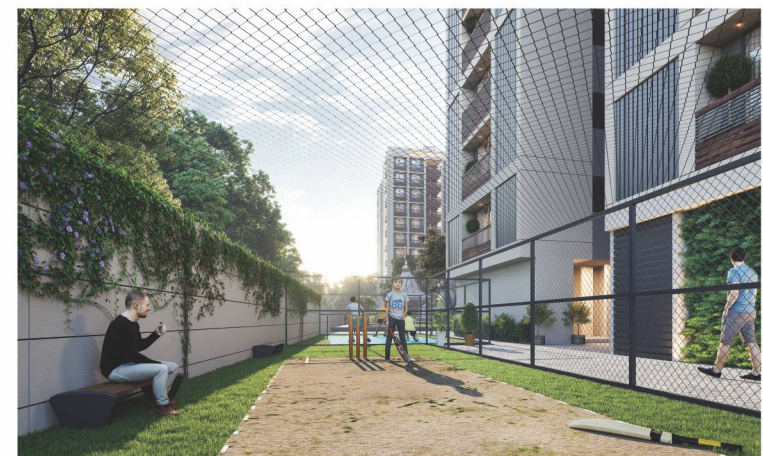



**Welcome
Health
into Life**

All that's meant to make you feel good, healthy and at peace within, has a specific place within your dwelling space! Gym, yoga or cricket, as you like it, we have facilitated it, for your happiness, mentally & physically!



YOGA ZONE



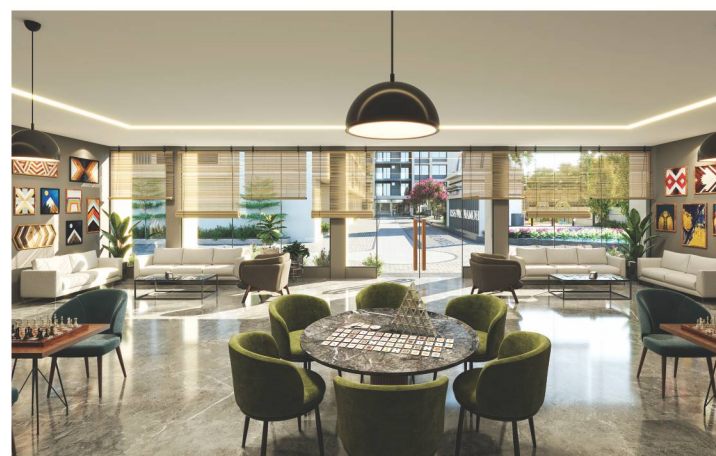
CRICKET PITCH


Welcome
**Energy
into Life**

Abundant indoor games and heaps of books to enhance your knowledge, give yourself a royal treat with all that your heart desires! Whether it's playing non-stop or reading non-stop, whatever you urge, you'll find an amenity to satiate it!



LIBRARY



SENIOR CITIZEN ROOM



A place of your dreams

Riseonic Namoh was conceptualized to give you the pleasure of good living! A place specially meant for Jains, every minute detail has been given due importance to in the making of this fascinating scheme. Experience its illuminating fervor by owning it!


**RISEONIC
NAMOH**
ABODES OF LUXURY!



**It's cozy, it's chic;
It has all you need!**

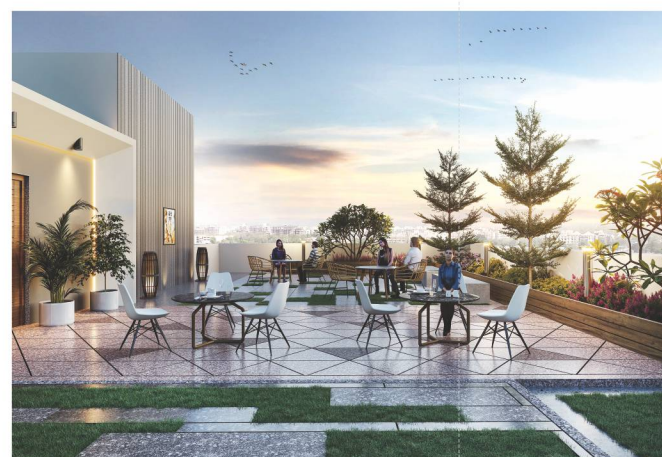
The grand opulence of Riseonic Namoh gives it a style quotient that's trending and makes the space throbbing with a lot of design expertise! Designed to perfection, it's about luxurious living at its best!

ENTRANCE FOYER

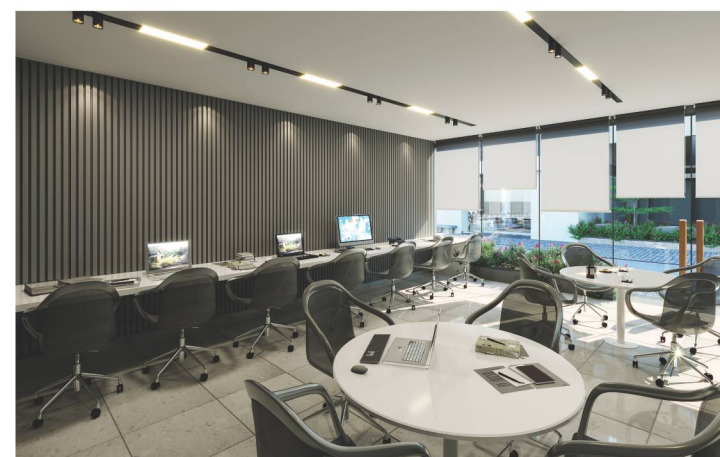



**World
at your feet**

Coming of age facilities, be it the work zone to the comfortable and relaxing space of the cafeteria, or the entrance foyer; the decor of every individual space has an element of elegance & contemporary outlook with an underlying excellence in form & function!



CAFETERIA



WORK ZONE

Lavish Interiors merged
with Beautiful Exteriors!

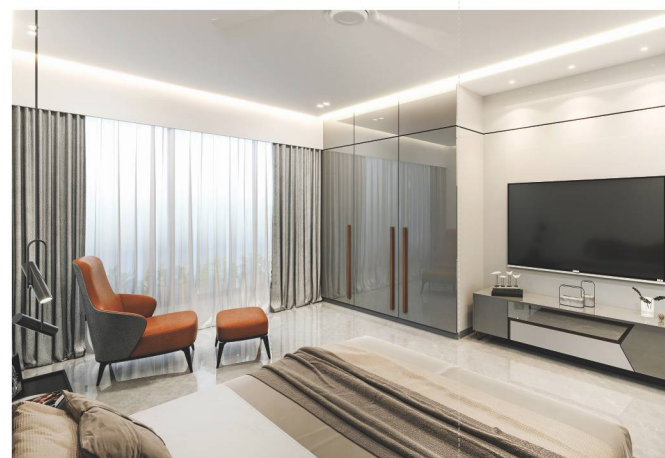


LIVING



Welcome Luxury into Life

The splendid living spaces that give lasting impressions of grace; the moment you enter the ambience of these marvelous decors, your heart will beat an extra beat!



BEDROOM



BEDROOM

Modern living for modern folks!



SPECIFICATIONS



STRUCTURE

- R.C.C. Frame Structure.
- Structure design as per IS code considering earthquake resistance.



WALL

- All internal walls will be finished with putty over mala plaster.
- All external walls will be finished with double coat mala plaster with texture finish.



PLUMBING

- Concealed plumbing with premium quality pipes and fittings.
- For continuous pressurized water supply a common borewell.



KITCHEN

- Granite finished platform with SS sink, Designer glazed tiles with dado up to lintel level.
- Electrical point for microwave and mixer. Plumbing and electrical provisions for water purifier & washing machine.



FLOOR FINISH

- Premium quality vitrified tiles in drawing, dining, kitchen & all bedrooms.



DOORS & WINDOWS

- Decorative laminated main entrance door with brass fittings & fixtures. All other doors are flush doors with paint.
- Aluminium section window with plain glass with granite jambs.



ELECTRIFICATION

- Concealed copper flexible wiring with adequate number of electrical points & branded modular switches.
- TV & AC points in Drawing room & All bedrooms.
- Centralized distribution board with MCBs & ELCB for safety protection.
- D.G. backed up common area & lift.



TOILETS

- Full covered elegantly designed toilets with designer tiles and colour co-ordinated sanitary wares.



TERRACE

- Open terrace finished with suitable water proofing & china mosaic flooring for heat reflection.



FIRE

- Government approved fire safety system.



ADVANCEMENT

- Lightening arrester for protection against Thunderstorm.

DEVELOPERS



Corporate Office : 1208/09/10/11, Ganesh Glory,
Nr. BSNL Office, S.G. Highway, Ahmedabad, Gujarat 382421.

For more information : M : 7383797919, 8141412541

Web : www.theriseonic.com

mail : sales@theagppgroup.com

RERA No. : PR/GJ/AHMEDABAD/AHMEDABAD CITY/AUDA/MAA08484/210521 Website: gujrera.gujarat.gov.in

Notes : • Stamp Duty, Registration Charges, Legal Documentation Charges, GST, Advance Maintenance, Fix Maintenance Charges and Electrical Co. Charges including cable and sub-station cost shall be borne by the purchaser • Any Additional charges, taxes, cess or duties levied by the Government / Local authorities prior, during or after the completion of the scheme will be borne by the purchaser • This brochure is intended only to convey the essential design and technical features of the scheme • All elements, objects, treatments, materials, equipment and colour schemes shown are artist's impression. Actual may be different as per architect's design • Irregular Payment will automatically ensure the cancellation of the booking, the amount will be refunded only after a new booking with a 10% deduction of unit cost as an administration charge and same is applicable on self cancellation.



Site : Riseonic Namoh, Nr. Arham Park,
B/h. Acher Bus Depot, Sabarmati, Ahmedabad, Gujarat 380 005.

LOCATION ADVANTAGES

■ VISAT JUNCTION	0.7 Km.	3.0 Min.
■ BRTS BUS STATION	0.7 Km.	3.0 Min.
■ METRO STATION	1.2 Km.	4.0 Min.
■ 4D SHOPPING MALL	1.7 Km.	6.0 Min.
■ PVR CINEMA	1.7 Km.	6.0 Min.
■ MOTERA STADIUM	1.9 Km.	7.0 Min.
■ SABARMATI RAILWAY STATION	3.0 Km.	9.0 Min.
■ SABARMATI RIVER FRONT	5.5 Km.	12.0 Min.
■ AIRPORT	10.3 Km.	18.0 Min.



Premium planning
for plush homes!



Plan Guide



Premium planning
for plush homes!



P l a n G u i d e


GROUND
 FLOOR PLAN

LIST OF AMENITIES

- | | |
|--------------------------------------|---|
| 1) DECORATIVE ENTRANCE GATE | 24) SANDPIT AREA |
| 2) SECURITY CABIN | 25) KIDS EXERCISE AREA |
| 3) ENTRANCE PLAZA | 26) GAZEBO |
| 4) FAMILY DROP ZONE | 27) YOGA & MEDITATION DESK |
| 5) SCHOOL BUS PICK POINT | 28) OPEN AIR THEATER |
| 6) GROUND FLOOR NO VEHICLE ZONE | 29) PARTY LAWN |
| 7) INNOVATIVE ENTRANCE FOYER | 30) SITTING AMIDST NATURE |
| 8) SPACIOUS SOCIETY OFFICE | 31) LANDSCAPED COMMON PLOT |
| 9) INDOOR GAMES | 32) JOGGING TRACK |
| 10) TODDLER ROOM | 33) BASKET BALL |
| 11) GYMNASIUM | 34) SKATING TRACK |
| 12) MULTI-PURPOSE HALL | 35) BADMINTON COURT |
| 13) COMMUNITY KITCHEN WITH WASH YARD | 36) TENNIS COURT |
| 14) MUSIC ROOM | 37) CRICKET PITCH |
| 15) TV ROOM | 38) 24 HR. POWER BACKUP FOR COMMON AREA |
| 16) CO-WORKING SPACE | 39) ALLOCATED PARKING |
| 17) MIND GAMES & CARD ROOM | 40) TERRACE GAZEBO |
| 18) SENIOR CITIZEN ROOM | 41) TERRACE COFFEE POINT |
| 19) PATHSHALA | 42) TERRACE PANTRY |
| 20) UPASHRAY | 43) SOLAR POWERED COMMON AREA |
| 21) LIBRARY | 44) CCTV SURVEILLANCE |
| 22) JAIN DERASAR | 45) 24 HR. WATER SUPPLY |
| 23) CHILDREN PLAY AREA | 46) ELECTRICAL VEHICLE CHARGING POINT |



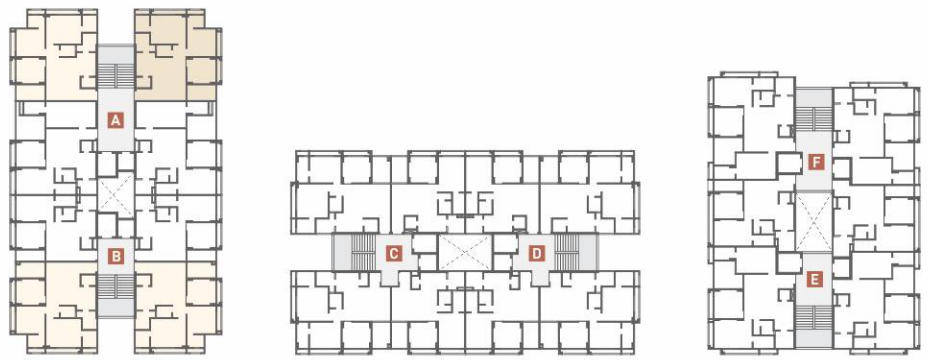
TYPICAL
FLOOR PLAN



12.00 MT. WIDE ROAD

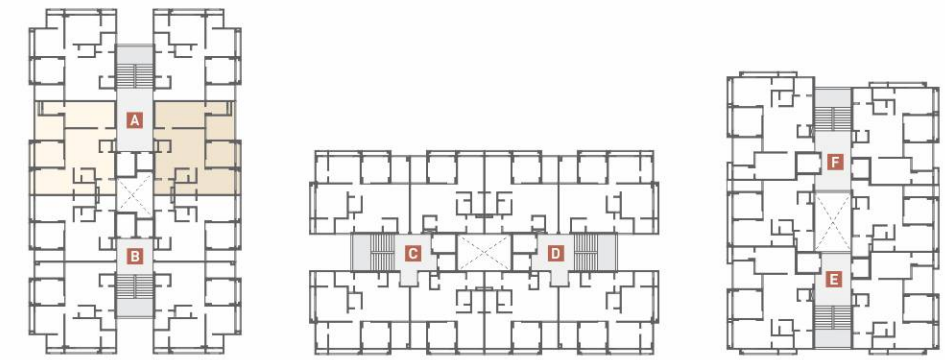
9.00 MT. WIDE ROAD

9.00 MT. WIDE ROAD



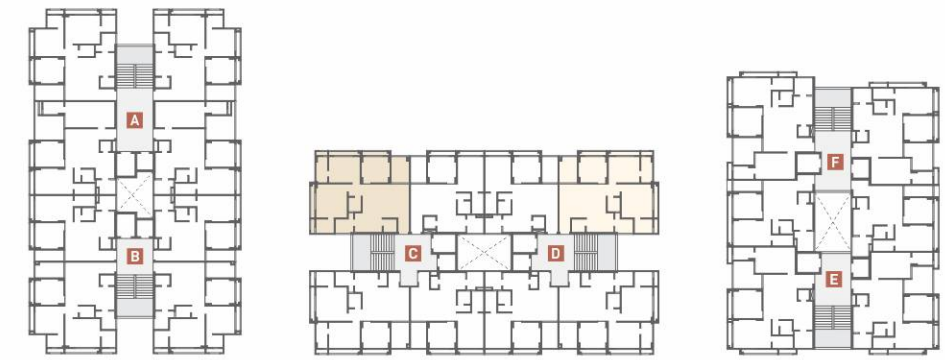
TYPE A | **BLOCK A & B**
 UNIT NO.
 101 TO 901, 104 TO 904

3 BHK
 UNIT FLOOR PLAN



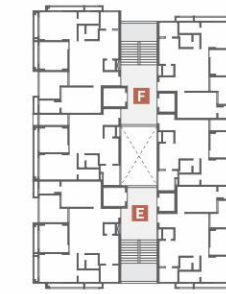
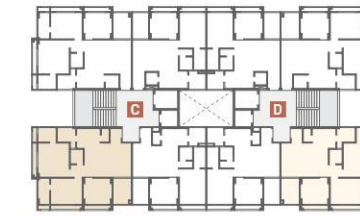
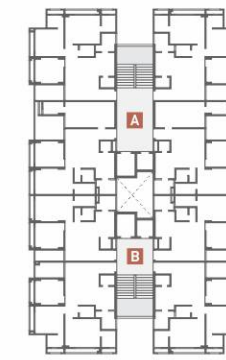
TYPE A1 | **BLOCK A**
 UNIT NO.
 102 TO 902, 103 TO 903

3 BHK
 UNIT FLOOR PLAN



TYPE A2
BLOCK C & D
 UNIT NO.
 101 TO 1001

3 BHK
 UNIT FLOOR PLAN

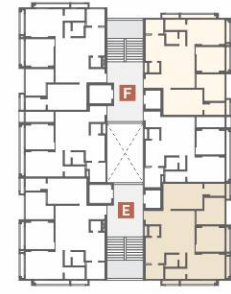
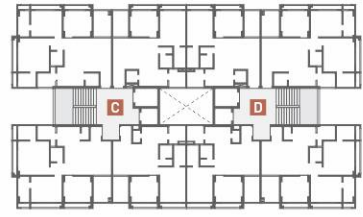
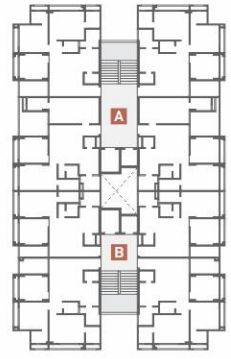


TYPE A3

BLOCK C & D

UNIT NO.
104 TO 1004

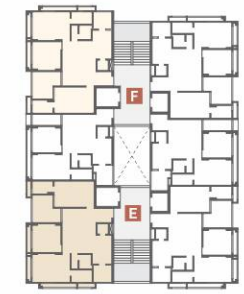
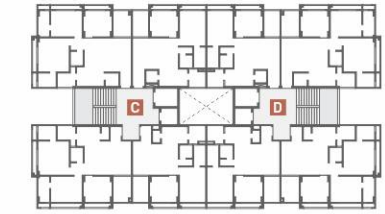
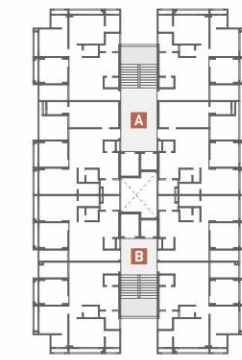
3 BHK
UNIT FLOOR PLAN



TYPE A4 | **BLOCK E & F**
UNIT NO.
101 TO 1001



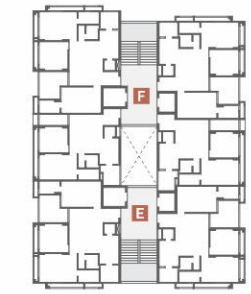
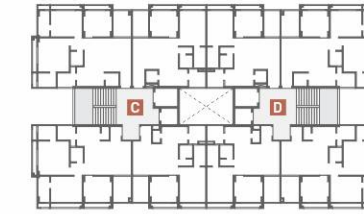
3 BHK
UNIT FLOOR PLAN



TYPE A5

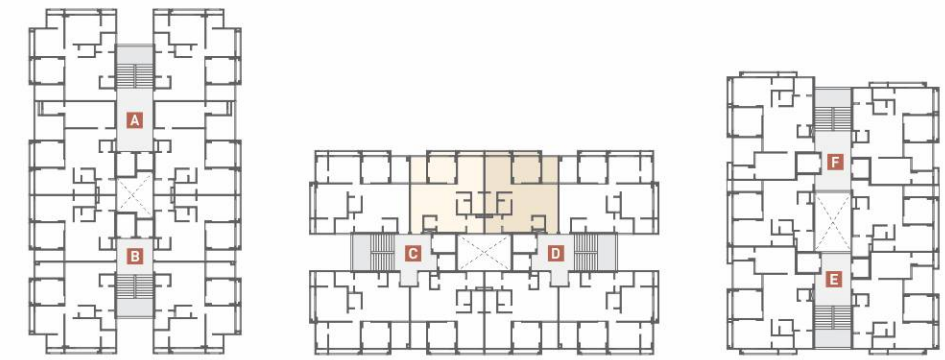
BLOCK E	BLOCK F
UNIT NO. 102 TO 1002	UNIT NO. 104 TO 1004

3 BHK
UNIT FLOOR PLAN

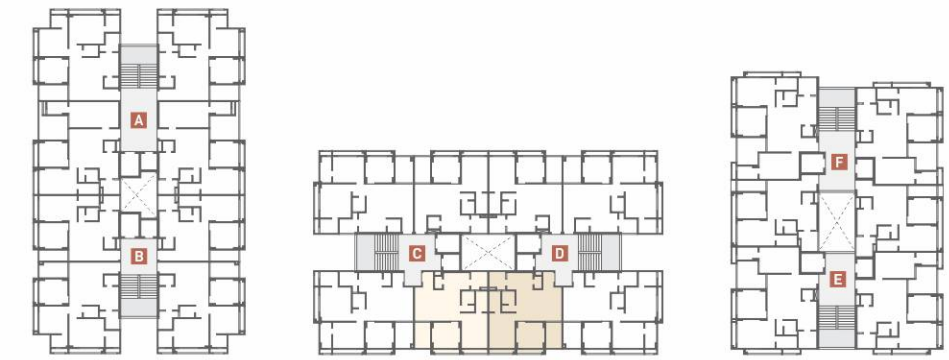


TYPE B **BLOCK B**
UNIT NO.
102 TO 902, 103 TO 903

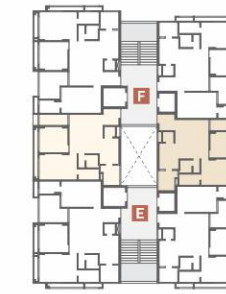
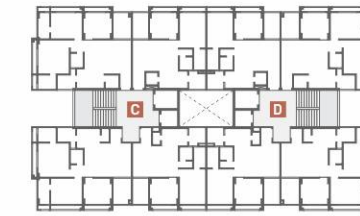
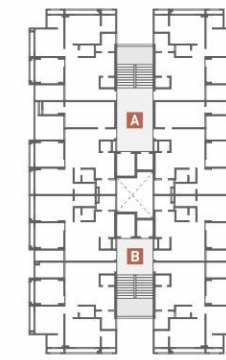
2 BHK
UNIT FLOOR PLAN



TYPE B1 | **BLOCK C & D**
 UNIT NO.
 102 TO 1002

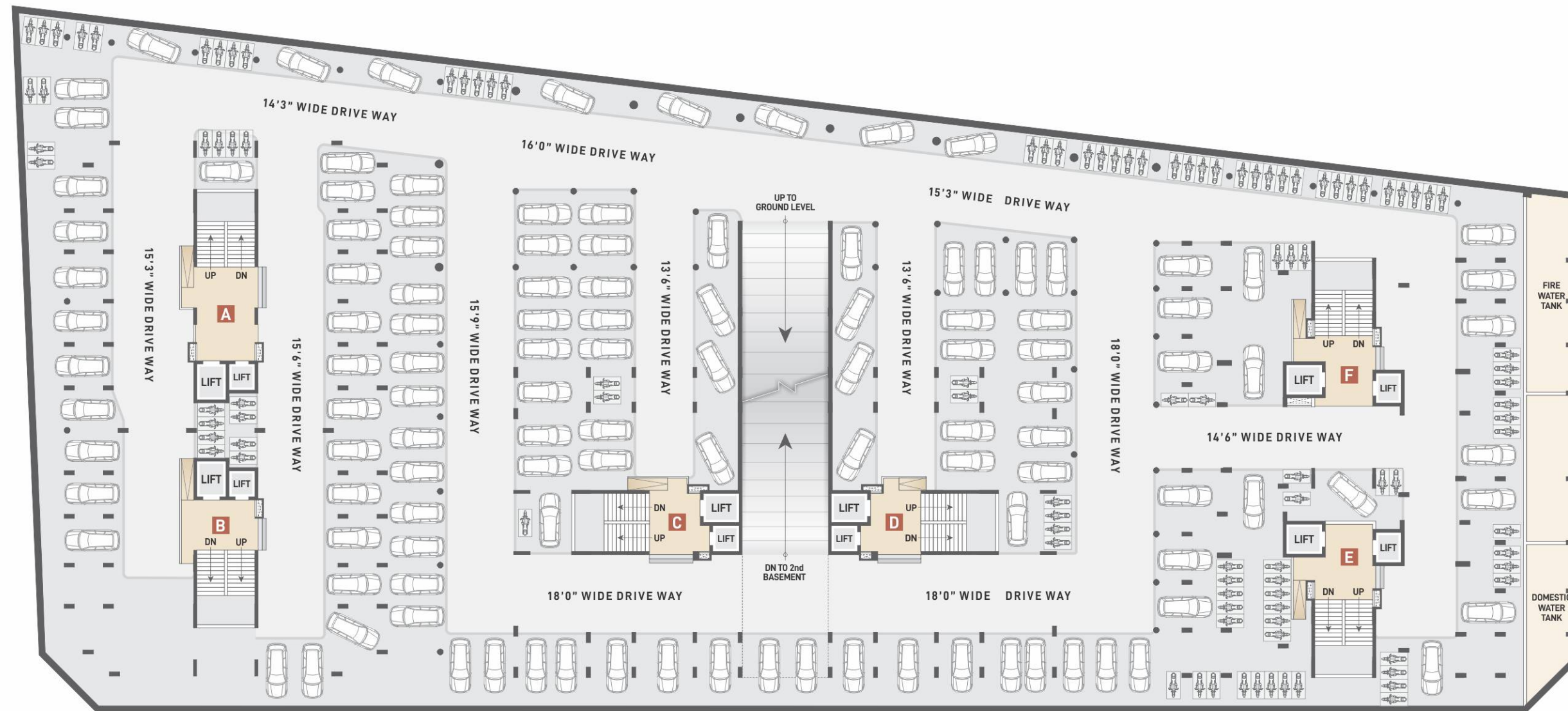


TYPE B2
BLOCK C & D
 UNIT NO.
 103 TO 1003

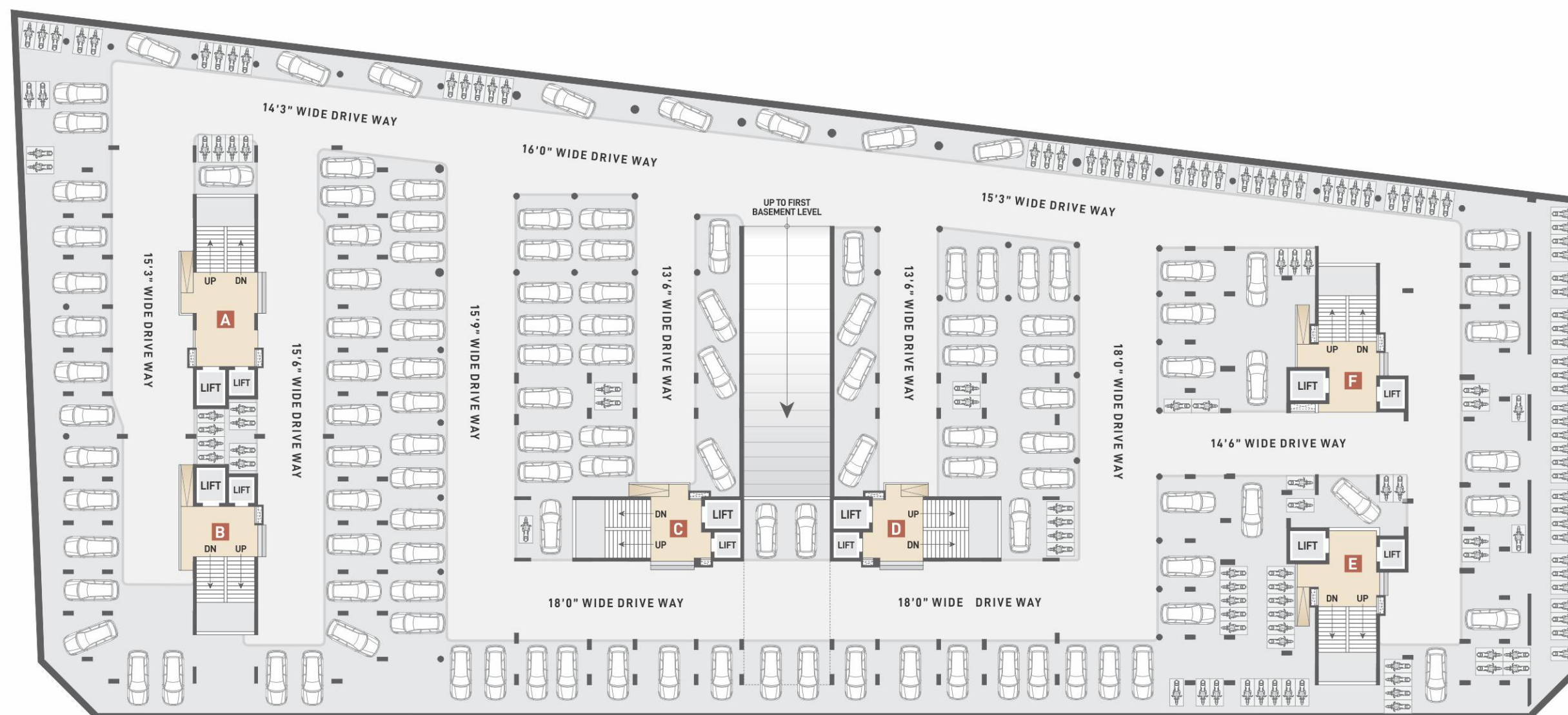


TYPE B3 | **BLOCK F**
 UNIT NO.
 102 TO 1002, 103 TO 1003

2 BHK
 UNIT FLOOR PLAN



BASEMENT
LEVEL - ONE



BASEMENT
LEVEL - TWO

www.theriseonic.com

E-CUBE 9712906003